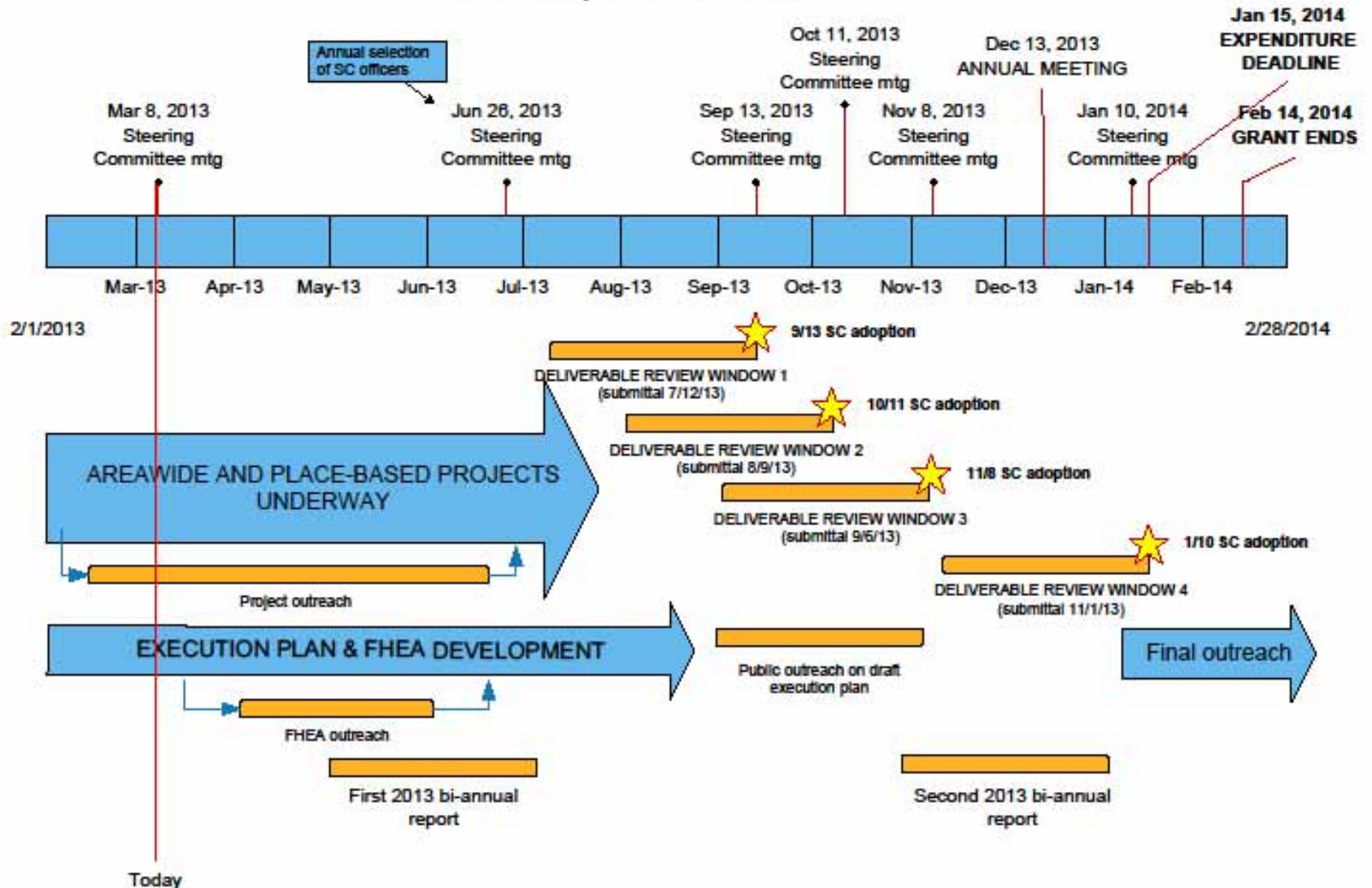


NY-CT Sustainable Communities Planning Program Close Out Schedule

Thursday, March 07, 2013



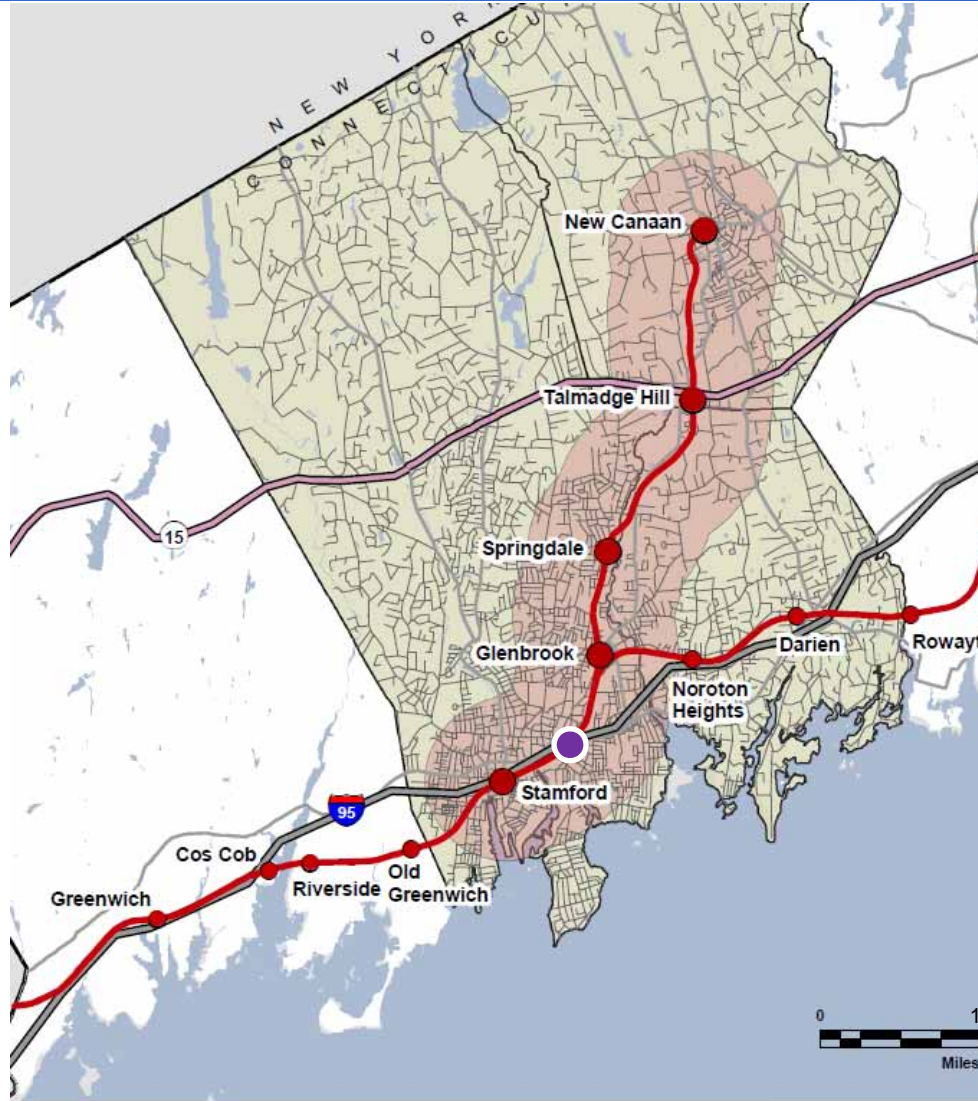
Stamford East Main Street Transit Node Feasibility Study

Presented to:
Stakeholder Committee – NY-CT Sustainable Communities Consortium
March 8, 2013



SOUTH WESTERN REGIONAL PLANNING AGENCY

Project Background

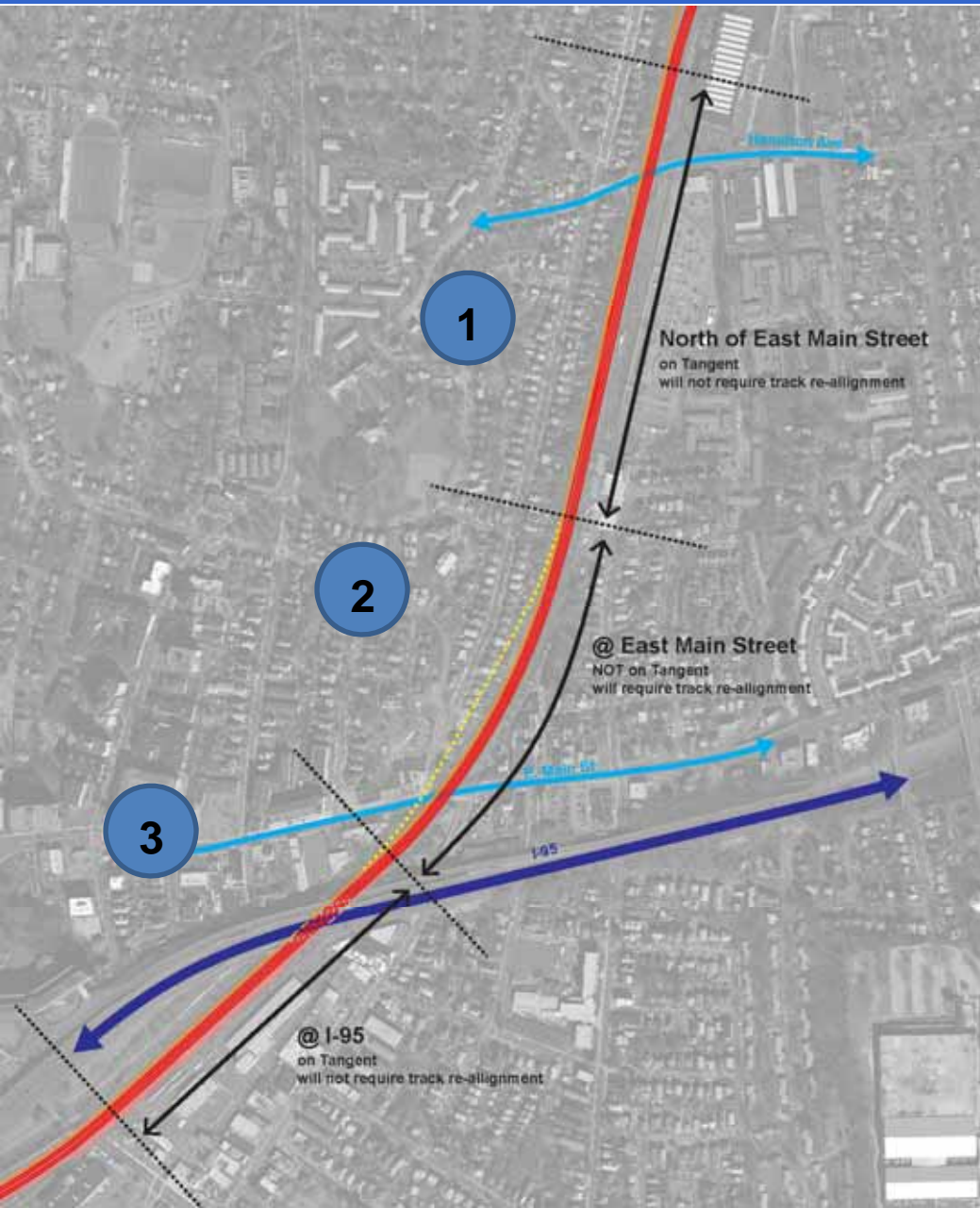


- New Canaan Branch
- Danbury Branch
- Interstate Routes
- State Routes
- New Canaan Branch Stations
- New Haven Line Stations
- Potential East Main St. Transit Node



- 1/2 mile study area
- RAIL
- NE corridor Main Line
- Rail Stations
- ROADS
- Limited Access Highways (I-95)
- Major Roads, non-freeway (Rt 1)
- Other Key Local and Connecting Roads

Summary of Alternatives



1. North of East Main St.
 - ◆ On tangent
 - ◆ Will not require track realignment
2. At East Main Street
 - ◆ Not on tangent
 - ◆ Will require track realignment
3. South of East Main St. (Under I-95)
 - ◆ On tangent
 - ◆ Will not require track realignment

Public Participation



- 2 Technical Committee Meetings
- 2 Stakeholder Committee Meetings
- June 2012 Livability Workshop:
70 public attendees
- February 2013 Presentation:
65 public attendees
- Next Public Outreach:
Late Spring 2013

